



WILLOWCREEK

Assisted Living & Memory Care



About Us

WillowCreek is a privately-owned and operated Assisted Living and Memory Care community located in Lake City, Florida. After purchasing the facility from Still Waters West, WillowCreek Assisted Living & Memory Care was established in 2019 and is the sister facility of WillowBrook Assisted Living, also located in Lake City. The current 72-bed facility, built in 2003, has undergone two additions, which added the Keepsake and Brookside Wings.

WillowCreek provides the highest quality of care for our residents while upholding their independence and integrity. Our trained, compassionate and dedicated staff create a safe, healthy, and loving home environment for each resident while combining the privacy of living in one's own home. Each resident can feel secure knowing that dedicated healthcare professionals are nearby 24 hours a day, seven days a week.

Our community, set in a beautiful landscape of shady woodlands is for seniors who want to maintain their rich, rewarding life without the responsibilities of running a household. We offer a choice of spacious private and companion rooms, restaurant-style dining, housekeeping services, exercise and wellness programs, daily activities and much more. Our residents may relax on our large patio and porch areas and listen to the sound of soothing water from our beautiful water fountain located in our landscaped interior courtyard. WillowCreek provides a wide range of services and amenities that enable our residents to derive meaning and value from every day.

We look forward to welcoming you to your new home.



Assisted Living & Memory Care

A majority of our population think “assisted living” is a politically correct term for “nursing home” and this is far from true. Nursing homes, or skilled nursing facilities, are designed for people with many health requirements who are unable to care for themselves. Whereas, assisted living communities are designed for people who want to maintain a level of independence but may need assistance with a few of their daily living activities, such as bathing or getting dressed. At WillowCreek we provide our residents with state-of-the-art care in an environment that promotes and enhances their independence.

WillowCreek’s trained, compassionate and dedicated staff create a safe, healthy, and loving home environment for each of our residents. We care for each resident individually, so they receive the appropriate assistance for their level of need. We work with each of our residents, understanding their needs first and then crafting together a plan that fits their situation. We also monitor our residents’ needs during their stay and can easily adjust plans at any time. Our residents enjoy life with the confidence of knowing we are here for them in whatever way they need.



Services & Amenities

We've invested time into developing the best services and amenities to make our community stand out. WillowCreek Assisted Living & Memory Care offers quality amenities, activities, and lifestyle choices, while promoting and preserving our residents' independence and integrity.

Physical & Social Activities

- Exercise Class
- Indoor Games
- Movies, concerts & other social events
- Bingo & other card games
- Shopping & cultural trips
- Arts & crafts
- Reminiscent Therapy
- Outdoor barbecues
- Holiday parties & socials
- Resident Council meetings
- Bible Study
- Group Sing-a-longs
- Guest speakers & presentations by local volunteer groups
- Birthday parties
- Ice Cream Socials

Dining Services

- 3 meals served restaurant style in two separate dining rooms
- Fine food carefully prepared to exacting standards
- Private dining for families or special events
- Snacks, fruit and drinks available 24/7

Resident Services

- 24/7 Supervision and on-call assistance by healthcare staff, including medication administration
- Scheduled transportation for activities and assistance with transportation for personal medical appointments
- Assistance with bathing and dressing
- Housekeeping, linens and laundry service
- Move-in Coordination

Community Features

- Beauty & Barber Shop
- Front porch, patio and gardens
- Large screen TV room
- Library
- On-site parking

Respite Services

- Same amenities as Assisted Living Residents



WILLOWCREEK
Assisted Living & Memory Care

Brookside Suites

Built as an addition to the original facility in 2007, the Brookside wing features spacious private, semi-private and companion suites. Our all-inclusive rates include the features and services listed below. Medicaid is accepted.



BROOKSIDE
DELUXE SUITE
423 SQ FT



BROOKSIDE
EFFICIENCY SUITE
258 SQ FT

Features & Services

- Comfortably sized living unit with two closets maximizes storage and personal space
- Emergency response & safety systems in bedroom & bath - call lights, sprinkler system, and smoke detectors with audible and strobe alerts
- Individually controlled heating & cooling units
- Spacious bathroom with handicapped roll-in showers
- Kitchenette with 4' upper and lower cabinets, hand sink, and refrigerator
- All Utilities, plus basic cable TV
- 24-hour nursing services, including medication administration
- 3 meals served daily
- Snacks, fruit, and drinks available 24 hours a day
- Housekeeping, linens and laundry services
- Assistance with dressing and bathing
- Personal hygiene supplies and services
- Group transportation for social activities and planned errands
- Assistance with transportation for doctors visits and appointments
- Daily social and physical activities



WILLOWCREEK
Assisted Living & Memory Care

Creekside Suites

Our Creekside suites, located near the main building entrance, are part of the original facility built in 2003. Creekside is perfect for residents who wish to be closer to the building's common areas and dining room. Our all-inclusive rates include the features and services listed below. Medicaid is accepted.



CREEKSIDE
COMPANION SUITE
217 - 297 SQ FT

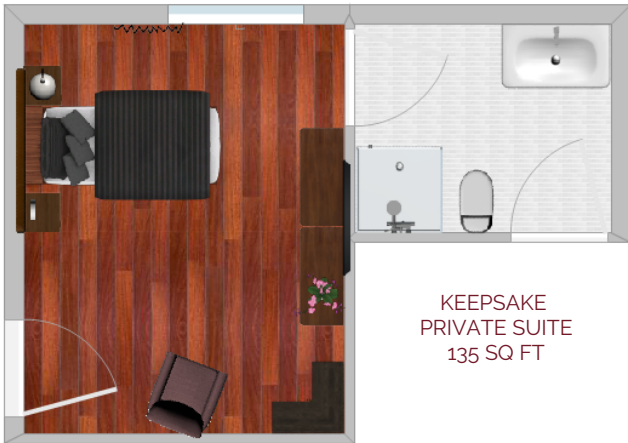


Features & Services

- Comfortably sized living unit maximizes personal space
- Emergency response & safety systems in bedroom & bath - call lights, sprinkler system, and smoke detectors with audible and strobe alerts
- Spacious bathroom with handicapped roll-in showers
- All Utilities, plus basic cable TV
- 24-hour nursing services, including medication administration
- 3 meals served daily
- Snacks, fruit, and drinks available 24 hours a day
- Housekeeping, linens and laundry services
- Assistance with dressing and bathing
- Personal hygiene supplies and services
- Group transportation for social activities and planned errands
- Assistance with transportation for doctors visits and appointments
- Daily social and physical activities

Keepsake Memory Care Suites

Built as an addition to the original facility in 2007, the Keepsake wing features private and semi-private suites for our memory care residents. Keepsake provides a secure, calm and home-like environment with a private dining room. Our all-inclusive rates include the features and services listed below. Medicaid is accepted.



Features & Services

- Comfortably sized living unit maximizes personal space
- Emergency response & safety systems in bedroom & bath - call lights, sprinkler system, and smoke detectors with audible and strobe alerts
- Spacious bathroom with handicapped roll-in showers
- All Utilities, plus basic cable TV
- 24-hour nursing services, including medication administration
- 3 meals served daily in private dining area
- Snacks, fruit, and drinks available 24 hours a day
- Housekeeping, linens and laundry services
- Assistance with dressing and bathing
- Personal hygiene supplies and services
- Group transportation for social activities and planned errands
- Assistance with transportation for doctors visits and appointments
- Daily social and physical activities

